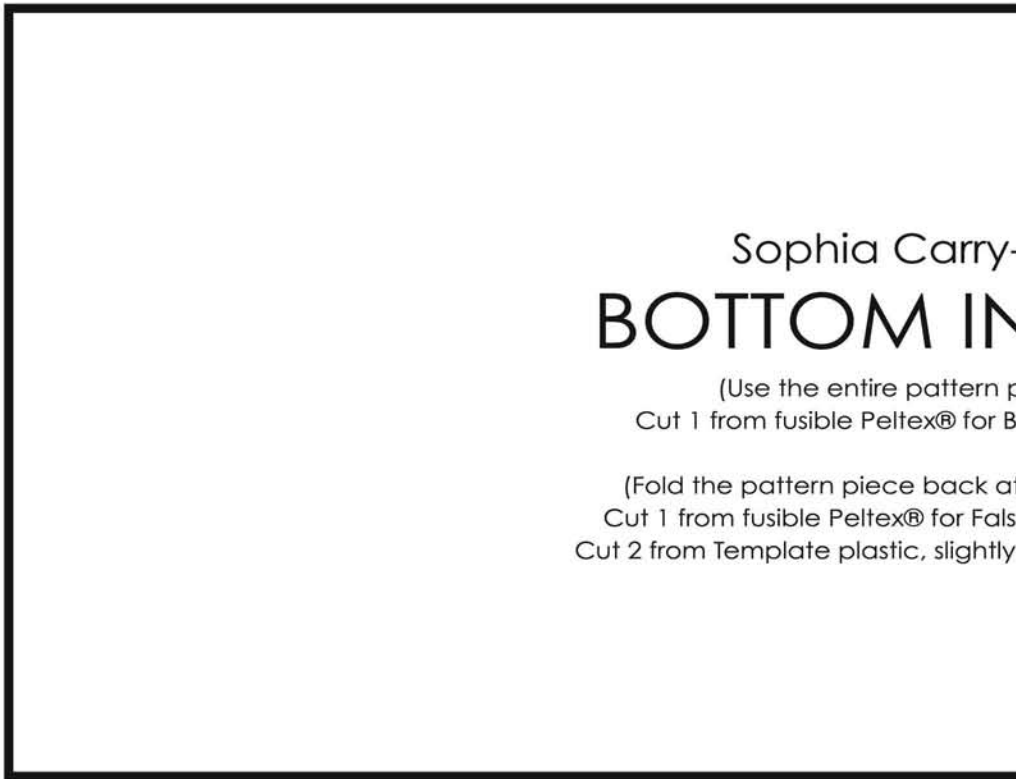


### **HOW TO TAPE TOGETHER THE BOTTOM INSERT PATTERN PIECE**

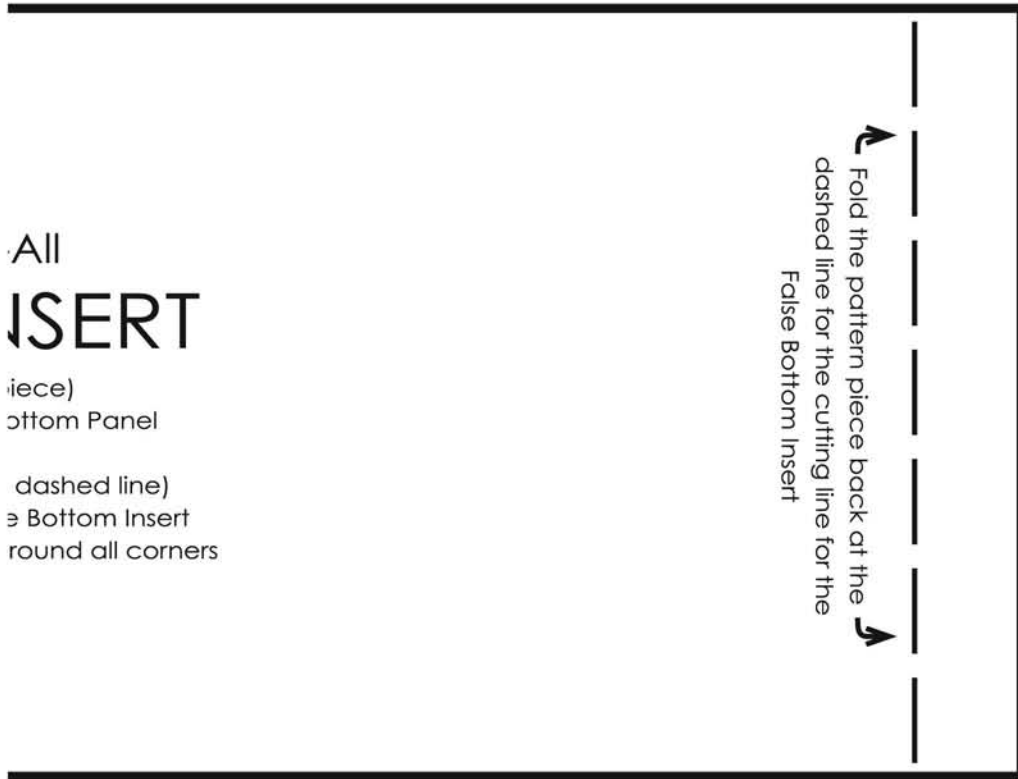
The "Sophia Carry-all Bottom Insert" pattern piece is too large to print out on one sheet of 8.5" x 11" paper. You will need to tape the pattern pages together. There are 2 separate pages. Take a ruler and line up the numbered marks along the edge of the 1st pattern page. Use a craft knife, and cut the excess paper away. Repeat to cut the edges on the other pattern page. Then match the marks that correspond with the circled numbers next to them. Tape the 2 pieces of paper together to make a full size pattern piece.

① |



② |

| ①



# All INSERT

(piece)  
Bottom Panel

(dashed line)  
⇒ Bottom Insert  
round all corners

| ②